

# H770S

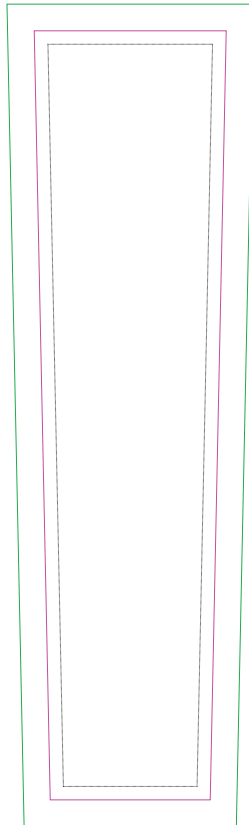
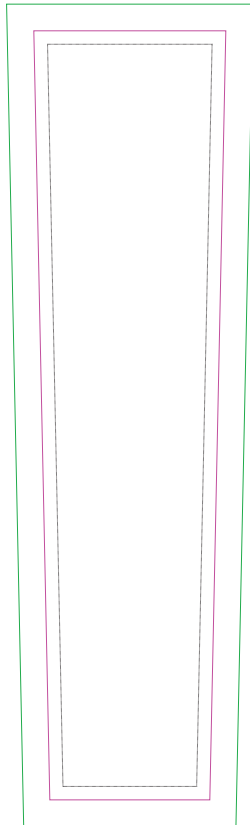
TBD Seamless Adult Unisvesal Cooling Arm Sleeve (Pair) - Sublimation

JOB NO. .... CUSTOMER P.O. .... TOTAL QUANTITY .....

IMPRINT COLORS .....

**ART@25%**  
4"W x 16"H  
**SIDE 1**

**ART@25%**  
4"W x 16"H  
**SIDE 2**



THE DASHED LINE SHOWS THE MAXIMUM  
IMPRINT AREA AND DOES NOT PRINT.



**\*\*FOR REFERENCE ONLY\*\***  
NOT EXACT SIZE, PROPORTION, PLACEMENT.

## CHECK LIST

- Plated \_\_\_\_\_
- Imprint Color
- Item Number
- Item Color
- Imprint Size
- Logo Orientation
- Ink Change Yes  No
- Copy Change Yes  No
- Adhesion
- Numbers of Hits

Approved by \_\_\_\_\_

Comments: \_\_\_\_\_

Recieved by \_\_\_\_\_

**FOR INTERNAL USE ONLY**

**ARTIST** \_\_\_\_\_